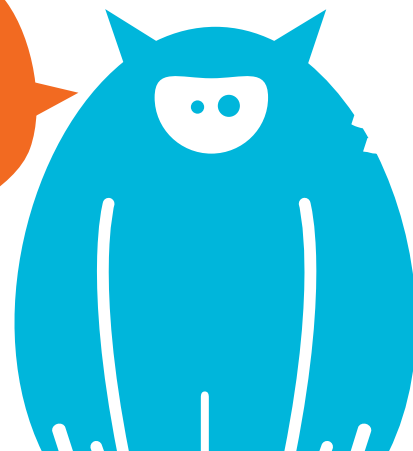




Flexible, friendly and affordable  
E-commerce & content management

14 DAY  
FREE  
TRIAL

Whether you're new to the world of the web or still looking for a better platform after all these years, Yetti is for you. It's one of the most flexible e-commerce and content management platforms on the planet.



FLEXIBLE



COST EFFECTIVE



POWERFUL



SCALABLE

### Favourite places

Visit a section and click the pin icon to add a favourite to this list.

Blog

Tour

### Easy to use

Yetti sites are a breeze to manage. And it's great for content management, with or without e-commerce.



### Total design freedom

There are literally no restrictions. It's your HTML and your CSS, which you can edit at anytime from your browser!



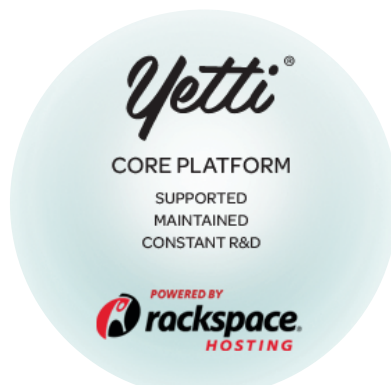
### Content management

Edit page content, write articles and upload media. Yetti makes it easy with an advanced media library - update once, across your site.



### E-commerce

Product management, customisable pricing rules, promotions and shipping - all built in.



### Reliable & Secure

Our infrastructure is load balanced and resilient, built on the Rackspace Cloud and continuously monitored.



### Integrate

REST based web service APIs allow third party developers to write apps that integrate with Yetti.

14 DAY  
FREE  
TRIAL



find out more at [Yetti.co.uk](http://Yetti.co.uk)

Packages	Chilled	Frozen	Arctic	Abominable
Items	3000	6000	10,000	25,000
E-commerce	-	✓	✓	✓
Transaction fees	-	2%	1%	0%
Bandwidth	Unlimited	Unlimited	Unlimited	Unlimited
Storage	Unlimited	Unlimited	Unlimited	Unlimited
Monthly cost	£25	£35	£50	£200

## Bolt ons

Additional Items	£10 per 5000 items, per month
Subscriptions	£5 per site, per month
Multi-language	£5 per site, per month

## Support

Upgraded SLA	<p>£10 per site, per month</p> <p>Our standard SLA includes 99% uptime. This can be upgraded to our advanced SLA with 99.9% uptime.</p>
Training	<p>£600 per day</p> <p>We can provide you with a comprehensive training programme, helping you to build sites within Yetti yourself.</p>
Developer	<p>£600 per day</p> <p>If you need additional developer resources, why not have one of the Yetti developers join your team.</p>
Bronze support	<p>£50 per month</p> <p>Email support provided Monday to Friday between 9am - 4pm (UK time).</p>
Silver support	<p>£100 per month</p> <p>Phone and email support provided Monday to Friday between 9am - 4pm (UK time).</p>
Gold support	<p>£300 per month</p> <p>Phone and email support provided 24 hours a day, seven days a week.</p>



find out more at [Yetti.co.uk](https://Yetti.co.uk)